



Hard Chess Puzzle # 0128

By

G Bud Games
<https://gbud.in>

February 5, 2022

Contents

Hard Chess puzzle # 0128 - Gain opponent's rook	3
Hard chess puzzle 0128	3
Solution to hard chess puzzle 0128	4
Solution 1	4
Right moves for the solution to the hard chess puzzle 0128	8
Explanation for the moves	8
Categories of hard chess puzzle 0128	8
hard chess puzzle 0128 chart	9
How to view the solution to hard chess puzzle 0128	11
How to get help for moves in the hard chess puzzle 0128	12
Play chess for free	13

List of Figures

1	Solve this hard chess puzzle 0128. Gain opponent's rook @ https://gbud.in/gmjwvx3	3
2	Solve this hard chess puzzle online with solution @ https://gbud.in/gmjwvx3	3
3	Initial board position of hard chess puzzle 0128	4
4	Rd1	5
5	Qxd1	5
6	Qxd1	6
7	Ne3+	6
8	Kf3	7
9	Nxd1	7
10	hard chess puzzle 128 chart 1	9
11	hard chess puzzle 128 chart 2	10
12	hard chess puzzle 128 chart 3	10
13	hard chess puzzle 128 chart 4	11
14	Click the solution button to view solutions @ https://gbud.in/gmjwvx3	11
15	Click the help button to get help on next move @ https://gbud.in/gmjwvx3	12
16	Solve more hard puzzles @ https://gbud.in/chshdpz	12
17	Solve other puzzles @ https://gbud.in/chsgppz	12
18	Play chess online for free. Solve puzzles and play with friends	13
19	Solve this puzzle online by scanning this QR code or go to the link below	14

Hard Chess puzzle # 0128 - Gain opponent's rook

Solve this hard chess puzzle and improve your chess games through improvement of your chess strategies and chess tactics. This hard puzzle is a subset of [kids games](#).

Puzzle No : 0128

Difficulty level : hard

Description : Gain opponent's rook

Next Move : Black

Player level : Advanced

Short URL for puzzle : <https://gbud.in/gmjwvx3>

Hard chess puzzle 0128

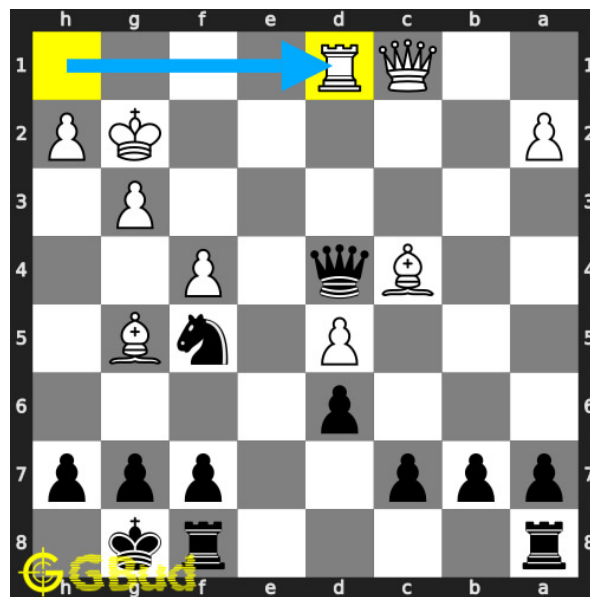


Figure 1: Solve this hard chess puzzle 0128. Gain opponent's rook @ <https://gbud.in/gmjwvx3>



Figure 2: Solve this hard chess puzzle online with solution @ <https://gbud.in/gmjwvx3>

Dont forget to check out [chess puzzles](#), [easy chess puzzles](#), [medium chess puzzles](#), [hard chess puzzles](#) and [chess puzzles collections](#) .

Solution to hard chess puzzle 0128

At this puzzle, next [move](#) is by [Black](#). The objective of the puzzle is to gain opponent's rook.

See the interactive solution at the [puzzle page](#)

Solution 1

Initial board position This is the initial board position of hard chess puzzle 0128.

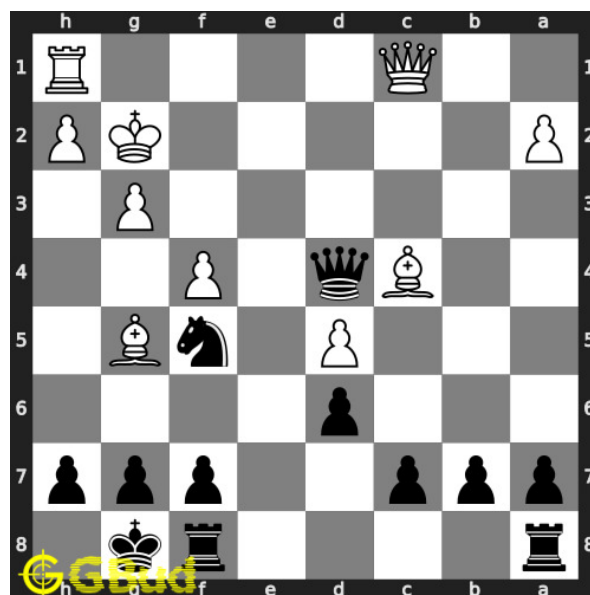


Figure 3: Initial board position of hard chess puzzle 0128

Move 1 Move by white

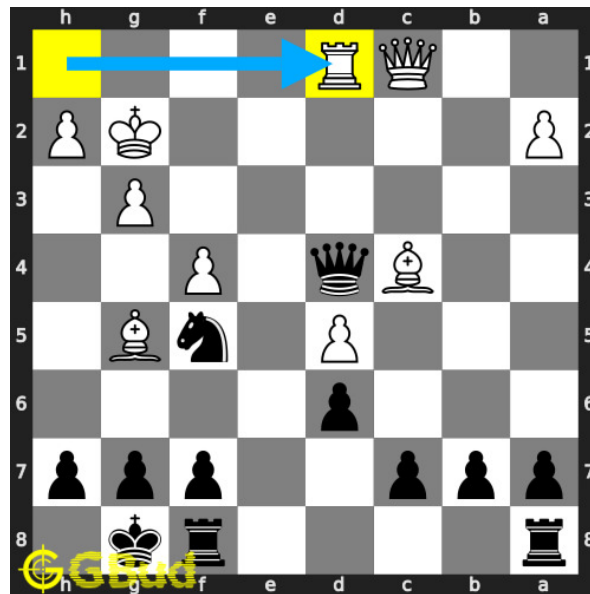


Figure 4: Rd1

opponent's **rook** threatens your **queen**.

Move 2 Move by black

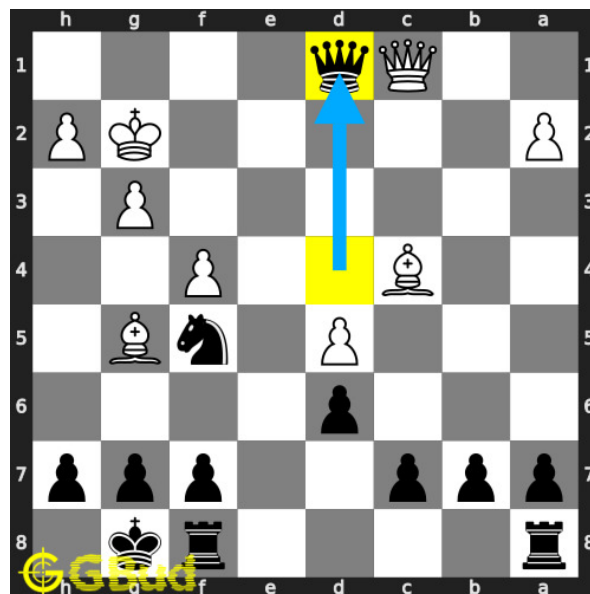


Figure 5: Qxd1

queen makes a **capture**

Move 3 Move by white

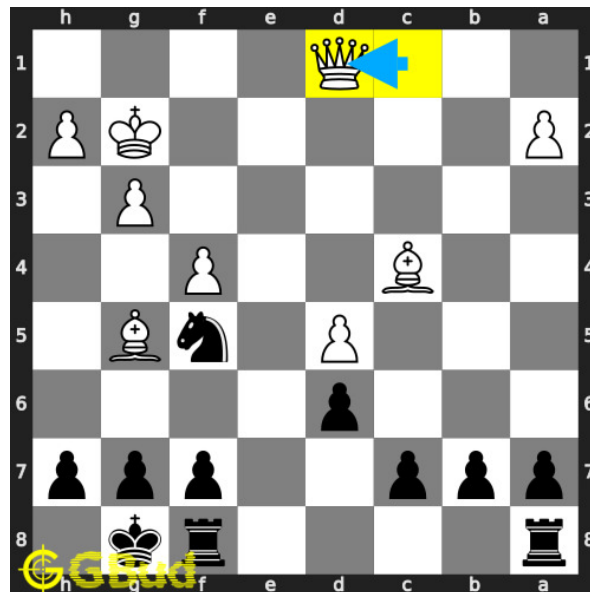


Figure 6: Qxd1

queen makes a capture

Move 4 Move by black

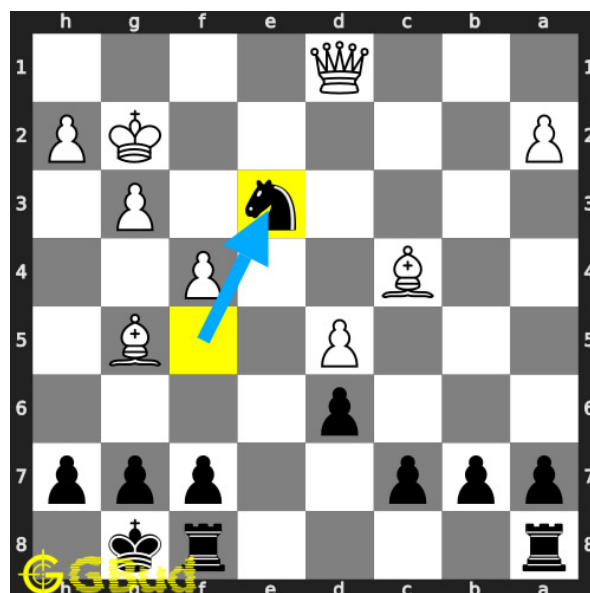


Figure 7: Ne3+

your knight forks opponent's king and queen.

Move 5 Move by white

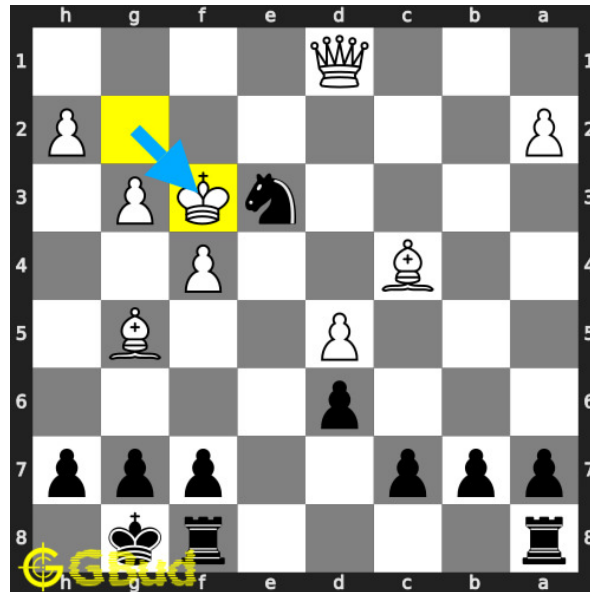


Figure 8: Kf3

opponent's **king** moved closer to your **knight**.

Move 6 Move by black

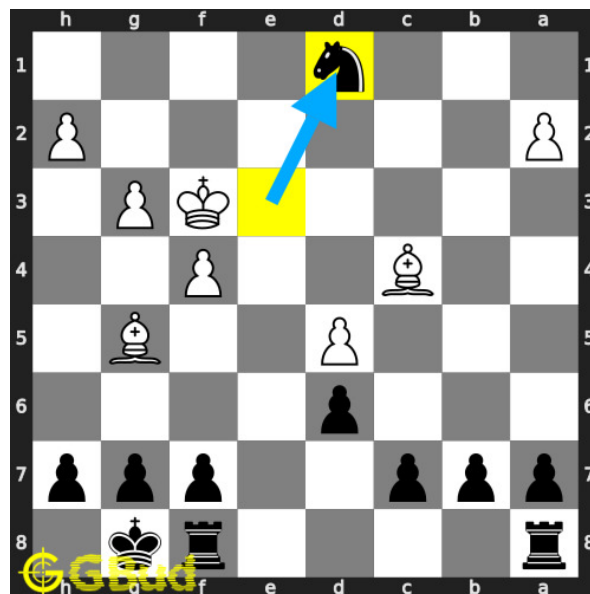


Figure 9: Nxd1

your **knight** captures the opponent's hanging **queen**. this is how you can gain opponent's **rook**.

Right moves for the solution to the hard chess puzzle 0128

Based on the objective of the puzzle, you have to make the right moves. Following are the right moves

1. Qxd1, Ne3+, Nxd1

Explanation for the moves

1. Rd1 - Opponent's rook threatens your queen.
2. Qxd1 - Queen makes a capture
3. Ne3+ - Your knight forks opponent's king and queen.
4. Kf3 - Opponent's king moved closer to your knight.
5. Nxd1 - Your knight captures the opponent's hanging queen. This is how you can gain opponent's rook.
6. For right move - Good. You understood how to gain a piece through a sacrifice.
7. For wrong move - You could have gained the rook after the sacrifice of the queen. Try again

Categories of hard chess puzzle 0128

This hard chess puzzle falls in these categories.

1. [Hard chess puzzles](#)
2. [Sacrifice puzzles in chess](#)
3. [Gain puzzles in chess](#)
4. [Fork puzzles in chess](#)
5. [Strategy puzzles in chess](#)
6. [Queen puzzles in chess](#)
7. [Knight puzzles in chess](#)

hard chess puzzle 0128 chart



Figure 10: hard chess puzzle 128 chart 1



Figure 11: hard chess puzzle 128 chart 2



Figure 12: hard chess puzzle 128 chart 3



Figure 13: hard chess puzzle 128 chart 4

How to view the solution to hard chess puzzle 0128

To view the [solution to this puzzle](#), follow the steps given below

1. Go to the [puzzle page](#)
2. Click the solution button (Key as shown [below](#)) to view the solution



Figure 14: Click the solution button to view solutions @ <https://gbud.in/gmjwvx3>

How to get help for moves in the hard chess puzzle 0128

To get help or the possible next moves in the puzzle, , follow the steps given below

1. Go to the [puzzle page](#)
2. Click the help button (exclamation mark as shown [below](#)) to get help or suggestion on next possible [move](#)



Figure 15: Click the help button to get help on next move @ <https://gbud.in/gmjwvx3>



Figure 16: Solve more hard puzzles @ <https://gbud.in/chshdpz>



Figure 17: Solve other puzzles @ <https://gbud.in/chsgppz>

Play chess for free

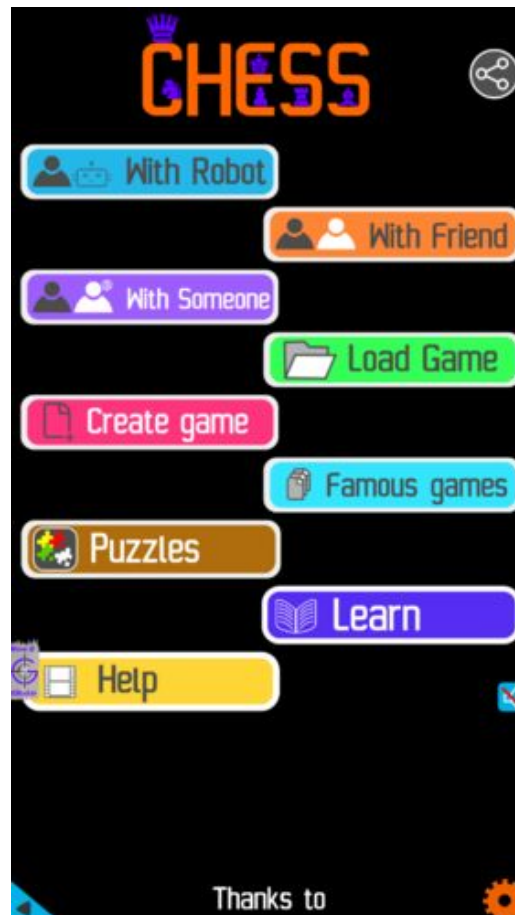


Figure 18: Play chess online for free. Solve puzzles and play with friends

Play chess for free at <https://gbud.in/chs>

We present you a platform to play chess online with friends for free. No need to install any app. You can play chess for free without registration or login.

Simple. You can do several chess related activities.

1. [solve chess puzzles](#)
2. [learn about chess](#)
3. [play chess with computer](#)
4. [play chess with friend](#)
5. [create your own chess games](#)

6. [fen viewer](#)
7. [fen editor](#)
8. [fen generator](#)
9. [pgn viewer](#)
10. [chess board editor](#)
11. [view famous chess games.](#)



Figure 19: Solve this puzzle online by scanning this QR code or go to the link below

<https://gbud.in/gmjwvx3>

Read the latest article on Hard Chess puzzle # 0128 - Gain opponent's rook by scanning this QR code or click the link

Previous article : « [Hard Chess puzzle # 0127 - Mate in 2 moves](#)

Next article : [Hard chess puzzles](#) »

[Back to top](#)

[Contact Us](#)